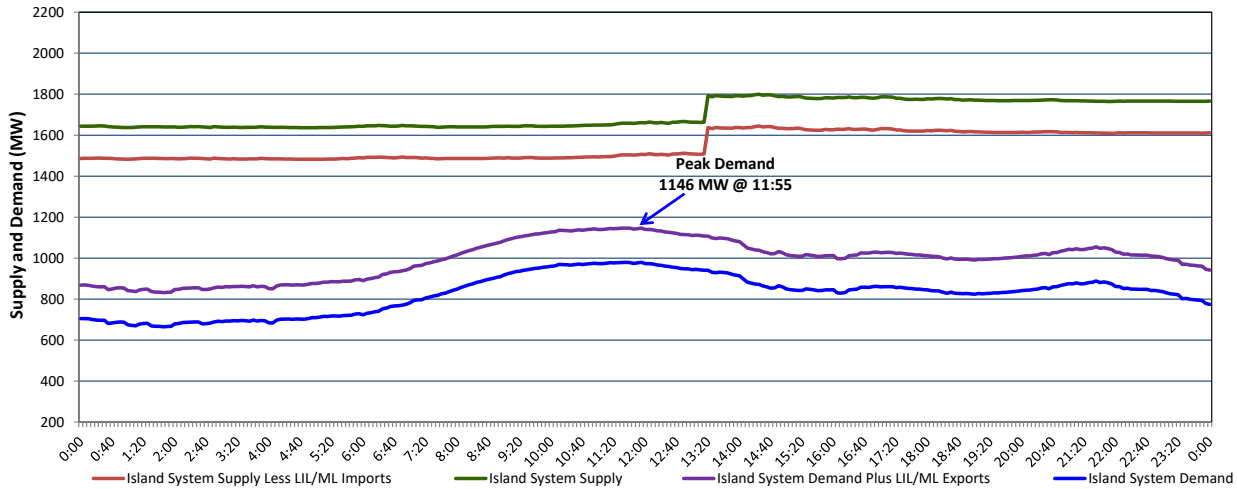


Newfoundland Labrador Hydro (NLH) Supply and Demand Status Report Filed Monday, May 16, 2022

Section 1 Island Interconnected System Supply, Demand & Exports Actual 24 Hour System Performance For Saturday, May 14, 2022



Supply Notes For May 14, 2022

1,2

- A As of 0857 hours, April 04, 2022, Holyrood Unit 3 unavailable due to planned outage (150 MW).
- B As of 0813 hours, April 19, 2022, Holyrood Unit 2 returned to service 150 MW (170 MW).
- C As of 1327 hours, May 08, 2022, Bay d'Espoir Unit 6 unavailable due to planned outage (76.5 MW).
- D As of 1234 hours, May 09, 2022, Holyrood Unit 1 available but not operating (170 MW).
- E **At 1318 hours, May 14, 2022, Holyrood Gas Turbine available (123.5 MW).**

Section 2 Island Interconnected Supply and Demand

Sun, May 15, 2022	Island System Outlook ³			Seven-Day Forecast	Temperature (°C)		Island System Daily Peak Demand (MW)	
					Morning	Evening	Forecast	Adjusted ⁷
Available Island System Supply: ⁵	1,695	MW		Sunday, May 15, 2022	4	0	1,130	1,130
NLH Island Generation: ^{4,8}	1,200	MW		Monday, May 16, 2022	2	5	1,185	1,185
NLH Island Power Purchases: ⁶	115	MW		Tuesday, May 17, 2022	5	5	1,035	1,035
Other Island Generation:	225	MW		Wednesday, May 18, 2022	5	6	985	985
ML/LIL Imports:	155	MW		Thursday, May 19, 2022	8	10	1,090	1,090
Current St. John's Temperature & Windchill:	4 °C	N/A	°C	Friday, May 20, 2022	7	7	1,070	1,070
7-Day Island Peak Demand Forecast:	1,185	MW		Saturday, May 21, 2022	11	10	1,025	1,025

Supply Notes For May 15, 2022

3

- F **At 0715 hours, May 15, 2022, Bay d'Espoir Unit 5 unavailable due to planned outage (76.5 MW).**

- Notes:
1. Generation outages for running and corrective maintenance are included. These are not unusual for power system operations. They generally do not impact customer supply. The power system operators schedule outages to system equipment whenever possible to coincide with periods when customer demands are low and sufficient supply reserves are available. However, from time to time equipment outages are necessary and reserves may be impacted.
 2. Due to the Island system having no synchronous connections to the larger North American grid, when there is a sudden loss of large generating units there may be a requirement for some customer's load to be interrupted for short periods to bring generation output equal to customer demand. This automatic action of power system protection, referred to as under frequency load shedding (UFLS), is necessary to ensure the integrity and reliability of system equipment. Under frequency events have typically occurred 5 to 8 times per year on the Island Interconnected System and the resultant customer load interruptions are generally less than 30 minutes. With the activation of the Maritime Link frequency controller during the winter of 2018, UFLS events have occurred less frequently.
 3. As of 0800 Hours.
 4. Gross output including station service at Holyrood (24.5 MW) and improved NLH hydraulic output due to water levels (35 MW).
 5. Gross output from all Island sources (including Note 4).
 6. NLH Island Power Purchases include: CBPP Co-Gen, Nalcor Exploits, Rattle Brook, Star Lake, Wind Generation and capacity assistance (when applicable).
 7. Adjusted for curtailable load, market activities and the impact of voltage reduction when applicable.
 8. Due to limitations inherent in the design of combustion turbines, the output of combustion turbines may be reduced in the event that ambient temperatures exceed the threshold.

Section 3 Island Peak Demand Information Previous Day Actual Peak and Current Day Forecast Peak

Sat, May 14, 2022	Actual Island Peak Demand ⁹	11:55	1,146 MW
Sun, May 15, 2022	Forecast Island Peak Demand		1,130 MW

- Notes: 9. Island Demand / LIL / ML Exports (where applicable) is supplied by NLH generation and purchases, plus generation owned and operated by Newfoundland Power and Corner Brook Pulp & Paper (Deer Lake Power, DLP).